

Welcome  
to our class!

# Lesson 1



## PREPARATION

1

Discuss what the Day of the Dead is.

## DICTATION

2

Listen to the text for 2 times.

## RECONSTRUCTION

3

Work in groups to formulate a sound text with the information included.

## ANALYSIS & CORRECTION

4

Compare the reconstructed and original text to learn grammar.

## PRACTICE

5

Design your own Sugar Skull to express your thoughts.

6  
FEEDBACK  
&  
REFLECTION



celebrate

*/'seləbreɪt/*

accept

*/ək'sept/*

take place

*/teɪk pleɪs/*

compare

*/kəm'peɪ/*

to examine or look for the difference between two or more things

to do something enjoyable because it is a special day

to happen

to agree to take something

Team 1	Roles	Responsibilities
	Secretary	<ul style="list-style-type: none"><li>● <b>shares</b> the screen</li><li>● <b>takes notes</b> during the discussion</li></ul>
	Presenter	<ul style="list-style-type: none"><li>● prepares to <b>share the discussion</b> later in class</li></ul>

notes:

Team 2	Roles	Responsibilities
	Secretary	<ul style="list-style-type: none"><li>● <b>shares</b> the screen</li><li>● <b>takes notes</b> during the discussion</li></ul>
	Presenter	<ul style="list-style-type: none"><li>● prepares to <b>share the discussion</b> later in class</li></ul>

notes:

Team 3	Roles	Responsibilities
	Secretary	<ul style="list-style-type: none"><li>● <b>shares</b> the screen</li><li>● <b>takes notes</b> during the discussion</li></ul>
	Presenter	<ul style="list-style-type: none"><li>● prepares to <b>share the discussion</b> later in class</li></ul>

notes:



1. Discuss what you know about *Day of the Dead*.
  - a. Day of the dead **is celebrated**...
2. (For those who complete the task early, try to create the text of *Introduction of Day of the Dead* with the words.)

celebrate

/'seləbreɪt/

accept

/ək'sept/

take place

/teɪk pleɪs/

compare

/kəm'pær/





## PREPARATION

1

Discuss what the Day of the Dead is.

## DICTATION

2

Listen to the text for 2 times.

## RECONSTRUCTION

3

Work in groups to formulate a sound text with the information included.

## ANALYSIS & CORRECTION

4

Compare the reconstructed and original text to learn grammar.

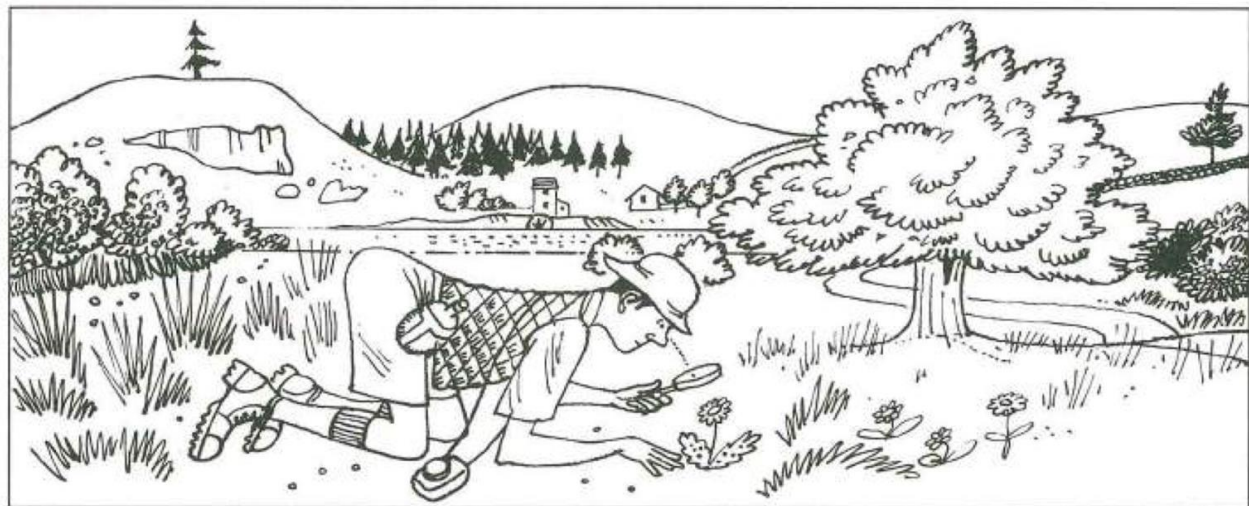
## PRACTICE

5

Design your own Sugar Skull to express your thoughts.

6  
FEEDBACK  
&  
REFLECTION









- to get the **main idea** of *Day of the Dead*





Welcome  
to our class!

# Lesson 2





1. Discuss what you know about *Day of the Dead*.
  - a. Day of the dead **is celebrated**...
2. (For those who complete the task early, try to create the text of *Introduction of Day of the Dead* with the words.)

celebrate  
/'seləbreɪt/

accept  
/ək'sept/

take place  
/teɪk pleɪs/

compare  
/kəm'pær/

## PREPARATION

1

Discuss what the Day of the Dead is.

## DICTATION

2

Listen to the text for 2 times.

## RECONSTRUCTION

3

Work in groups to formulate a sound text with the information included.

## ANALYSIS & CORRECTION

4

Compare the reconstructed and original text to learn grammar.

## PRACTICE

5

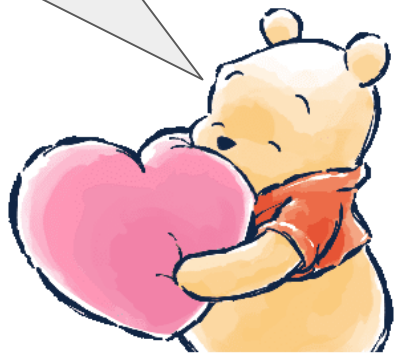
Design your own Sugar Skull to express your thoughts.

6  
FEEDBACK  
&  
REFLECTION

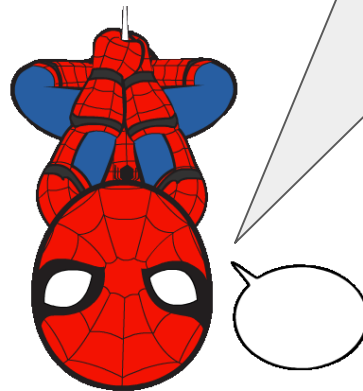




It takes place over



Mexico  
Death  
November  
remember





## PREPARATION

1

Discuss what the Day of the Dead is.

## DICTATION

2

Listen to the text for 2 times.

## RECONSTRUCTION

3

Work in groups to formulate a sound text with the information included.

## ANALYSIS & CORRECTION

4

Compare the reconstructed and original text to learn grammar.

## PRACTICE

5

Design your own Sugar Skull to express your thoughts.

6  
FEEDBACK  
&  
REFLECTION



Contributors in Team 1	Contributors in Team 2	Roles	Extra Responsibilities
Student A	Student D	Manager	<ul style="list-style-type: none"> <li>● <b>hosts</b> the discussion</li> <li>● makes sure <b>everyone participates</b></li> </ul>
Student B	Student E	Timer	<ul style="list-style-type: none"> <li>● keeps track of <b>time</b></li> <li>● <b>facilitates</b> the discussion</li> </ul>
Student C	Student F	“Scribe”	<ul style="list-style-type: none"> <li>● <b>types down</b> the group’s text based on the contributions made by the team members</li> <li>● <b>shares</b> the <b>screen</b></li> </ul>



- to create a **similar** text, **as close as possible** to the original in terms of the information included
- to produce a **sound English text**







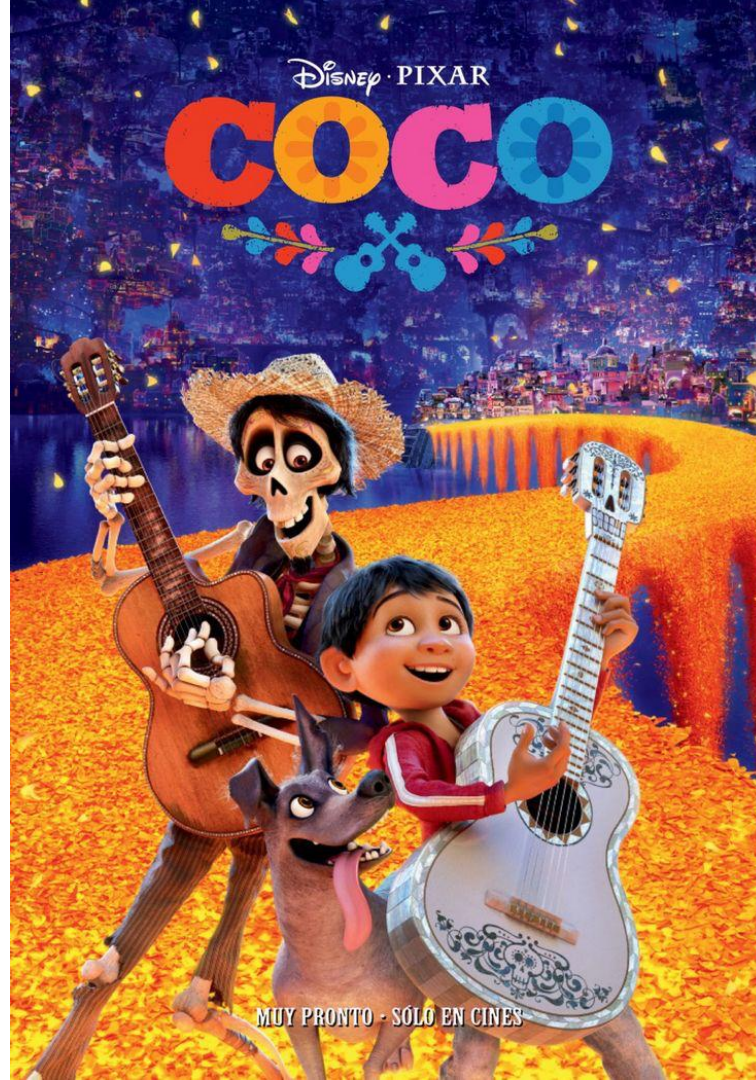


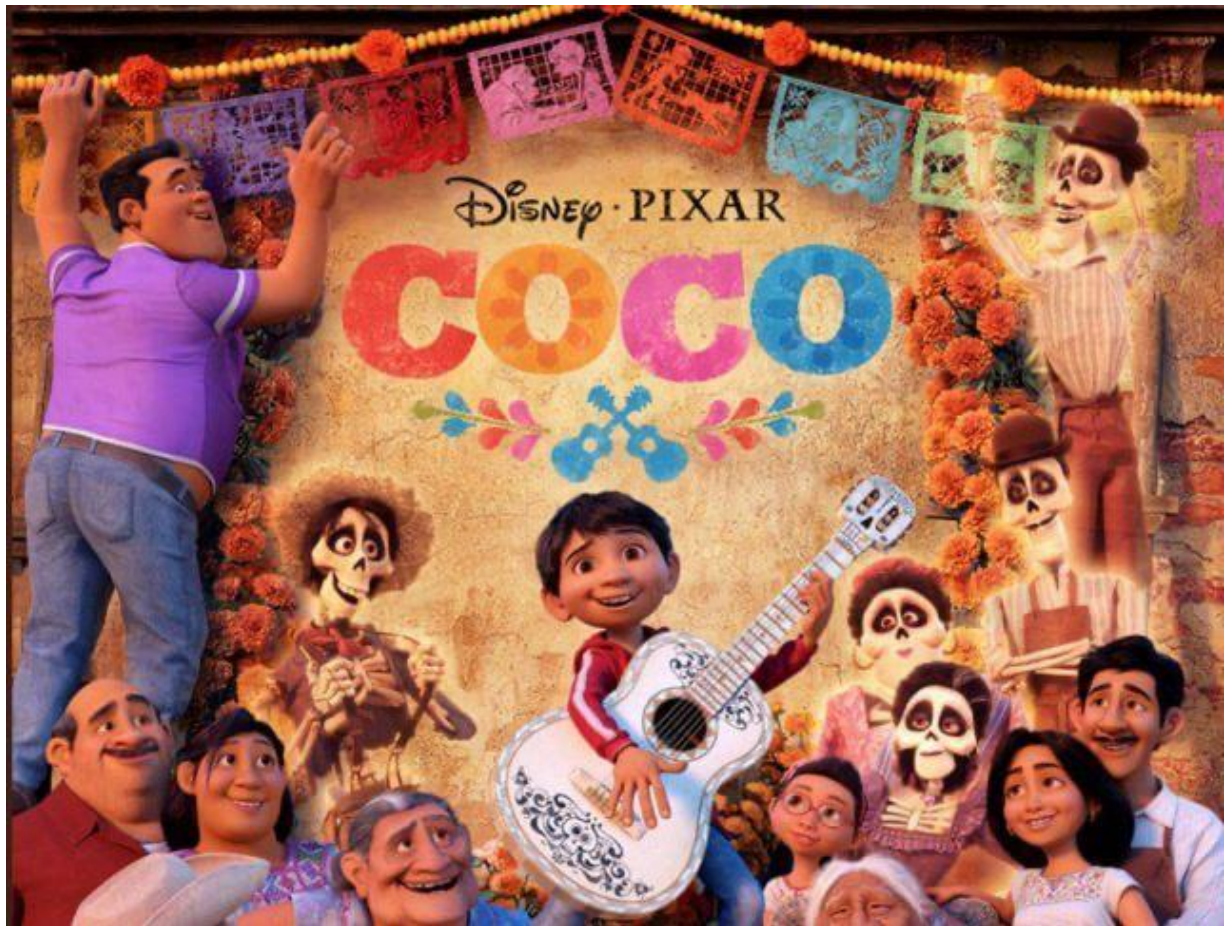


Welcome  
to our class!

# Lesson 3







## PREPARATION

1

Discuss what the Day of the Dead is.

## DICTATION

2

Listen to the text for 2 times.

## RECONSTRUCTION

3

Work in groups to formulate a sound text with the information included.

## ANALYSIS & CORRECTION

4

Compare the reconstructed and original text to learn grammar.

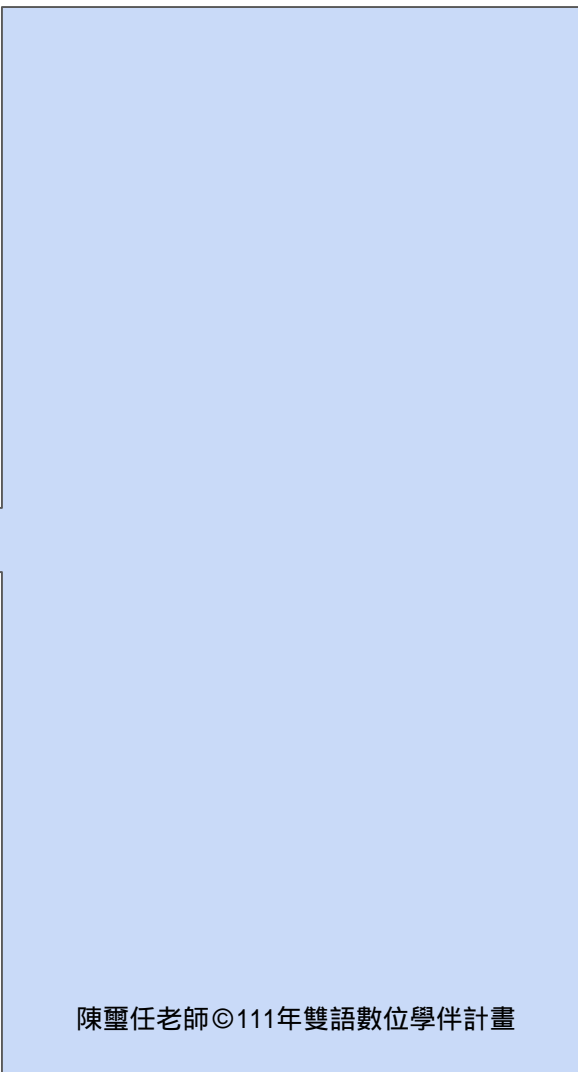
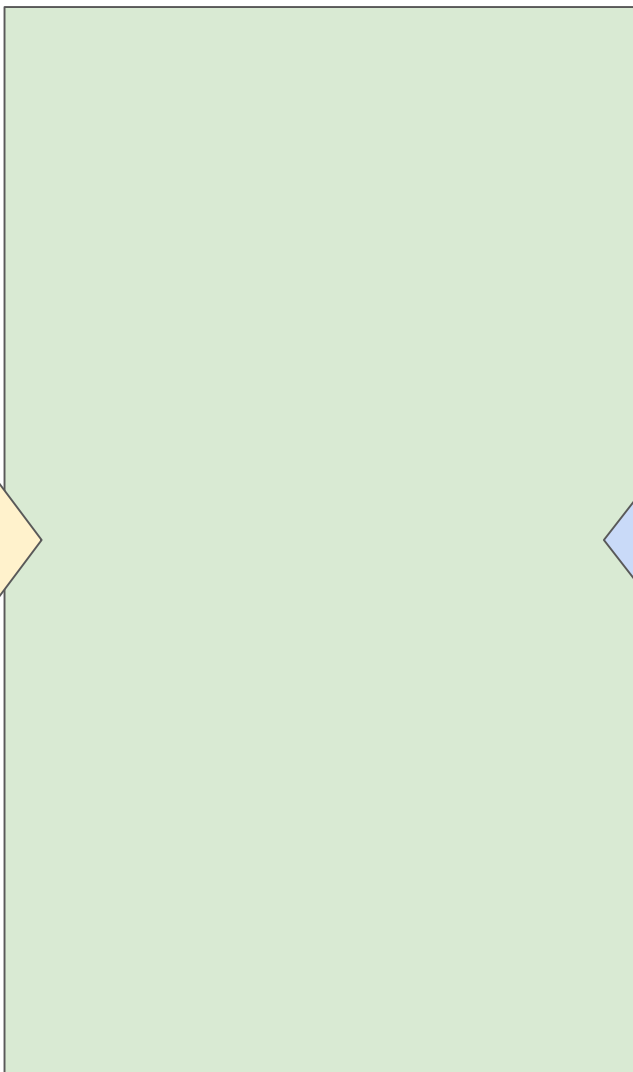
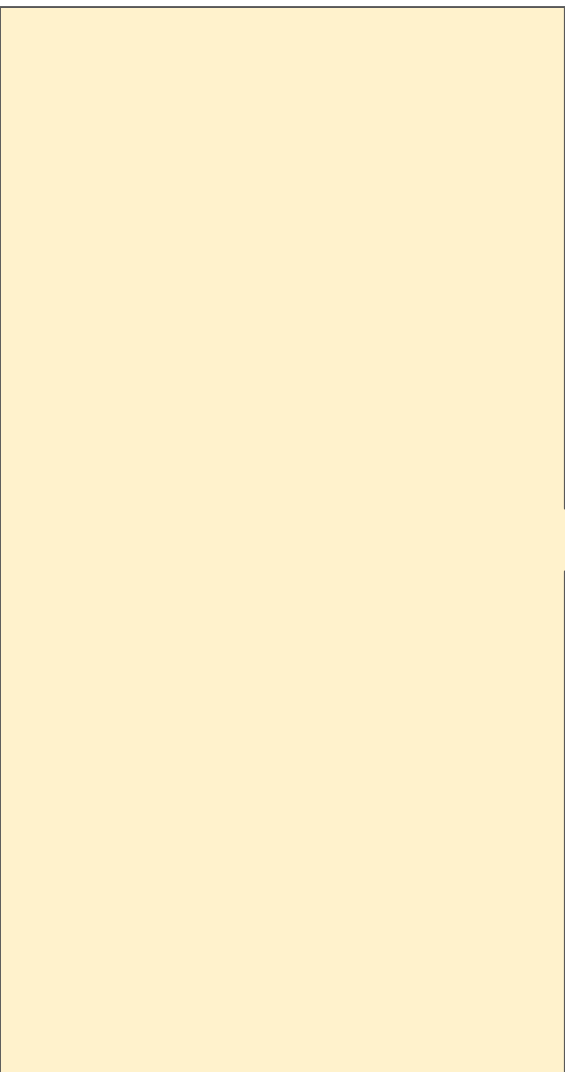
## PRACTICE

5

Design your own Sugar Skull to express your thoughts.

6  
FEEDBACK  
&  
REFLECTION





Contributors	Roles	Extra Responsibility
Student A	Manager	<ul style="list-style-type: none"> <li>● <b>hosts</b> the discussion</li> <li>● makes sure <b>everyone participates</b></li> </ul>
Student B	“Scribe”	<ul style="list-style-type: none"> <li>● <b>combines</b> the reconstructed text of both groups according to the discussion</li> <li>● <b>shares</b> the <b>screen</b></li> </ul>
Student C	Timer	<ul style="list-style-type: none"> <li>● keeps track of <b>time</b></li> <li>● <b>facilitates</b> the discussion</li> </ul>
Student D	Secretary 1	<ul style="list-style-type: none"> <li>● reminds the group to leave some time for the <b>final check</b> of the text for <b>grammar</b></li> </ul>
Student E	Secretary 2	<ul style="list-style-type: none"> <li>● <b>checks</b> the text for <b>logical sense</b></li> </ul>
Student F	Secretary 3	<ul style="list-style-type: none"> <li>● <b>checks</b> the text for <b>textual cohesion</b></li> </ul>

	<b>elaboration</b>	yes or no?
<b>grammar (Student D)</b>	Do you use the passive voice?	yes/no
<b>logical sense (Student E)</b>	Do you use the present simple tense?	yes/no
<b>textual cohesion (Student F)</b>	Do you use the words related to the topic of <i>the Day of the Dead</i> ?	yes/no





Welcome  
to our class!

# Lesson 4





# 10

## 10A passive: *be* + past participle

### Present: *am / is / are* + past participle

4 38))

- + Kevlar **is used** to make bullet-proof vests.
- White-out **isn't used** very much today.
- ? **Are** disposable diapers **used** all over the world?

### Past: *was / were* + past participle

- + The dishwasher **was invented** by Josephine Cochrane.
- Windshield wipers **weren't invented** until 1903.
- ? When **was** the washing machine **invented**?

- You can often say things in two ways, in the active or in the passive.  
*Josephine Cochrane **invented** the dishwasher. (active)*  
*The dishwasher **was invented** by Josephine Cochrane. (passive)*
- In the **active** sentence, the focus is more on **Josephine Cochrane**.
- In the **passive** sentence, the focus is more on **the dishwasher**.
- You can also use the passive when it isn't known or isn't important who does or did the action.  
*My car **was stolen** last week.*  
*Volvo cars **are made** in Sweden.*
- Use *by* to say who did the action.  
*The Lord of the Rings **was written by** Tolkien.*

Different from many other cultures, sugar skulls \_\_\_\_\_ (represent) as cheerful and happy. That is, certain sweetness in death \_\_\_\_\_ (imply) in its name. Sugar skulls \_\_\_\_\_ (use) to celebrate life. Many colors \_\_\_\_\_ (put) on sugar skulls. The colors can \_\_\_\_\_ (understand) differently.

- **Red** \_\_\_\_\_ (use) to represent blood.
- **Orange** \_\_\_\_\_ (use) to represent sunshine.
- **Yellow** \_\_\_\_\_ (use) to represent death.
- **Purple** is a symbol of pain.
- **Pink** and white illustrate hope, purity, and celebration.
- **Black** is a symbol of the Land of the Dead.



## PREPARATION

1

Discuss what the Day of the Dead is.

## DICTATION

2

Listen to the text for 2 times.

## RECONSTRUCTION

3

Work in groups to formulate a sound text with the information included.

## ANALYSIS & CORRECTION

4

Compare the reconstructed and original text to learn grammar.

## PRACTICE

5

Design your own Sugar Skull to express your thoughts.

6  
FEEDBACK  
&  
REFLECTION









## Introduction of the Day of the Dead

The Day of the Dead is celebrated in Mexico and other parts of Latin America. It is celebrated to remember loved ones who have died. People are helped to accept the idea of death. It takes place over two days, on November 1 and 2. The Day of the Dead can also be compared with Tomb-Sweeping Day in Taiwan.